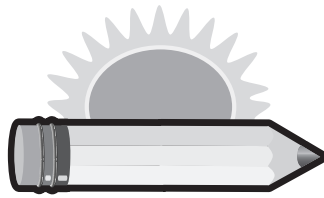


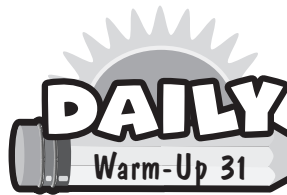
# Table of Contents

<b>Introduction</b> . . . . .	4	<b>Operations</b> . . . . .	41
<b>Tracking Sheet</b> . . . . .	6	Addition . . . . .	47, 49, 50, 51, 53, 56, 57, 59, 60, 64, 65, 66, 67, 69, 70, 71, 72
<b>Numbers and Numeration</b> . . . . .	7	Division . . . . .	42, 43, 44, 45, 46, 48, 51, 52, 54, 55, 56, 57, 58, 60, 61, 62, 64, 66, 68, 69
Addition . . . . .	8, 10, 12, 17, 22, 23, 24, 25, 26, 29, 33, 34, 36, 37, 38	Multiplication . . . . .	43, 44, 45, 47, 48, 49, 50, 51, 52, 53, 54, 55, 57, 58, 59, 60, 61, 63, 64, 65, 67, 68, 69, 70, 71, 72
Addition (Decimals) . . . . .	8, 10	Reasoning . . . . .	47, 68
Comparing Numbers . . . . .	12, 14, 15, 18, 36, 38	Subtraction . . . . .	42, 46, 49, 50, 51, 56, 58, 61, 62, 63, 65, 66, 67, 68, 69, 70, 71, 72
Decimals . . . . .	8, 10, 11, 12, 13, 14, 15, 16, 17, 18, 22, 23, 24, 30, 31, 32, 34, 35	Multi-Step Word Problems . . . . .	42, 43, 44, 45, 46, 48, 49, 50, 51, 52, 53, 56, 57, 59, 61, 62, 63, 64, 65, 66, 67, 68, 69, 70, 71, 72
Estimation . . . . .	23, 29, 36	Vocabulary . . . . .	63
Even/Odd Numbers . . . . .	8, 15, 35, 37	Answer Key . . . . .	73
Expanded Form . . . . .	16, 21, 28, 28, 29	<b>Measurement and Geometry</b> . . . . .	75
Fractions . . . . .	9, 11, 12, 13, 15, 17, 18, 22, 23, 25, 26, 27, 30, 31, 34, 35, 36	Angles . . . . .	79, 82, 90, 92, 105
Least to Greatest . . . . .	10, 15, 28, 29, 33	Area . . . . .	89, 90, 100, 101, 102
Mixed Numbers . . . . .	31	Capacity . . . . .	86, 91, 92, 102
Money . . . . .	12, 15, 19, 21, 32, 34, 38	Congruency . . . . .	76, 78, 83, 96
Multiplication . . . . .	11, 17, 19, 27	Converting Measurements . . . . .	76, 77, 78, 80, 81, 82, 84, 85, 91, 95, 98, 99, 100, 101, 104, 105
Mystery Number . . . . .	10, 27, 29, 32, 33	Coordinates . . . . .	93
Number Line . . . . .	9, 13, 18, 26, 34	Edges/Faces/Vertices . . . . .	77, 88, 89, 90, 91, 94, 104, 105, 106
Percentages . . . . .	26	Estimation . . . . .	86, 87, 91, 98, 102
Place Value . . . . .	8, 14, 16, 19, 20, 21, 24, 26, 30, 31, 34, 35, 36	Length/Width . . . . .	78, 84, 94, 101, 102, 103
Reading or Writing Numbers/ Number Words . . . . .	11, 12, 13, 14, 15, 19, 20, 21, 28, 32, 33, 34, 37, 38	Line Segments . . . . .	85, 105
Rounding Numbers . . . . .	22, 28	Number Lines . . . . .	96, 103
Standard Form . . . . .	28	Parallel Lines . . . . .	77, 87, 95, 105
Subtraction . . . . .	31, 33, 36	Perimeter . . . . .	78, 84, 89, 97, 100, 102
Word Problems . . . . .	10, 11, 12, 13, 14, 15, 17, 19, 21, 22, 23, 24, 25, 26, 27, 29, 30, 31, 32, 33, 34, 36, 37, 38	Perpendicular Lines . . . . .	76, 94, 104
Answer Key . . . . .	39	Reflection/Rotation/Translation . . . . .	79, 80, 81, 82, 83, 88, 104



# Table of Contents

Symmetry . . . . .	87, 92, 93	Reading Graphs. . . . .	114, 115, 116, 117, 120, 124, 128, 129, 130, 132, 137, 138, 139, 140
Temperature . . . . .	83, 97	Tables . . . . .	115, 121, 124, 129, 131, 135, 137, 138
Three-Dimensional Figures . . . . .	77, 79, 86, 88, 89, 90, 91, 93, 94, 100, 104, 106	Tally Charts. . . . .	125, 128
Two-Dimensional Figures. . . . .	79, 91, 97, 100 103, 105, 106	Unlikely/Likely. . . . .	127
Time . . . . .	80, 83, 87, 90, 96, 98, 100, 101, 106	Word Problems . . . . .	110, 111, 112, 113, 114, 115, 116, 117, 118, 119, 120, 122, 123, 124, 125, 128, 130, 131, 134, 140
Vocabulary . . . . .	84, 85, 86, 88, 91, 92, 93, 95, 98	Answer Key . . . . .	141
Weight. . . . .	87, 95, 96	<b>Algebra, Patterns and Functions. . . . .</b>	<b>143</b>
Word Problems . . . . .	81, 89, 97, 99	Combinations . . . . .	161
Word Problems (Length) . . . . .	76, 77, 78, 80, 84, 86, 91, 99, 102, 104	Dot Patterns. . . . .	147
Word Problems (Liquid Measurements) . . . . .	76, 82, 99	Fact Families. . . . .	163, 165, 166, 174
Word Problems (Weight) . . . . .	77, 81, 85, 96, 98	Functions. . . . .	145, 146, 148, 151, 153, 154, 159, 161, 163, 164, 166, 174
Answer Key . . . . .	107	Letter Patterns. . . . .	159, 172
<b>Graphs, Data and Probability . . . . .</b>	<b>109</b>	Number Patterns . . . . .	144, 146, 147, 148, 149, 151, 152, 154, 155, 157, 159, 160, 167, 168
Analyzing Data . . . . .	112, 114, 115, 117, 118, 119, 121, 122, 128, 131, 134, 139	Number Sentences . . . . .	146, 152, 154, 157, 158, 163, 164, 165, 169, 170, 171, 174
Bar Graphs . . . . .	114, 115, 116, 117, 120, 124, 125, 128, 129, 130, 132, 137, 138, 139, 140	Reflection . . . . .	165
Combinations . . . . .	111, 112, 113, 115, 116, 117, 118, 124, 125, 126, 127, 129, 132, 135, 136	Shape Patterns. . . . .	145, 147, 150, 161, 162, 164, 165, 167, 173
Completing Graphs. . . . .	125	Solving Equations. . . . .	148, 149, 150, 156, 157, 159, 160, 162, 163, 164, 165, 166, 169, 170, 171, 172, 173, 174
Median of the Data . . . . .	115	Time Patterns . . . . .	149, 151, 153
Order . . . . .	128, 131	Reading Tables, Charts, and Graphs. . . . .	144, 145, 146, 148, 151, 153, 154, 155, 156, 157, 158, 159, 161, 162, 163, 164, 167, 170, 171, 172, 173, 174
Patterns . . . . .	121	Word Problems . . . . .	144, 145, 146, 147, 148, 149, 150, 151, 152, 153, 155, 156, 157, 158, 159, 160, 161, 162, 164, 167, 168, 172, 173
Probability Using Cards . . . . .	130, 134, 135	Answer Key . . . . .	175
Probability Using Dice . . . . .	129, 136, 137		
Probability Using Money . . . . .	110, 113, 136		
Probability Using Spinners. . . . .	111, 112, 113, 114, 117, 120, 121, 122, 123, 125, 126, 127, 130, 132, 133, 136, 138, 139, 140		



Name \_\_\_\_\_ Date \_\_\_\_\_

1. Elton has a collection of 147 baseball cards. He wants to place them in an album with 7 baseball cards on each page. What could Elton do to find how many pages he will need for his album? (Circle the letter for the correct choice below.)

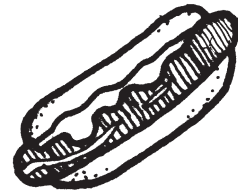
A. Subtract 7 from 147

C. Multiply 147 by 7

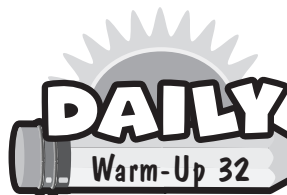
B. Add 147 and 7

D. Divide 147 by 7

2. Sam is entered in a hotdog-eating contest. Sam ate a total of 13 hotdogs. He ate 2 hotdogs every 4 minutes. How many minutes did it take Sam to eat all 13 hotdogs? (Show your work. Write your final answer on the line.)



\_\_\_\_\_



Name \_\_\_\_\_ Date \_\_\_\_\_

1. Abby bought flowers like the ones below to plant in her yard. Divide the flowers into groups of 9.

How many groups of 9 are there? \_\_\_\_\_

How many flowers are left over? \_\_\_\_\_



2. Mrs. Watkins went shopping and bought a comforter for \$89 and a set of curtains for \$64. She also bought a set of dishes for \$49. How much did she pay for all the items? (Show your work. Write your final answer on the line.)

\_\_\_\_\_

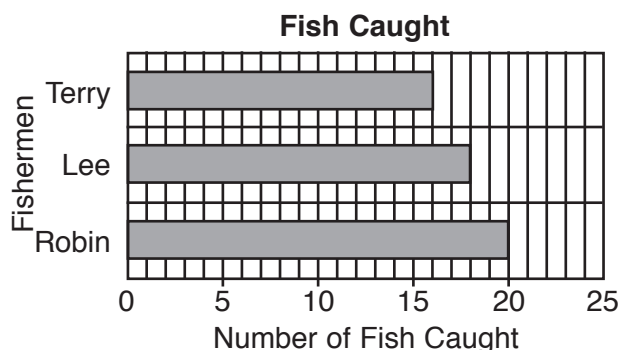


**DAILY**

Name \_\_\_\_\_ Date \_\_\_\_\_

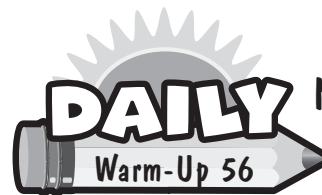
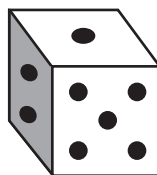
Warm-Up 55

1. Look at the bar graph. How many fish did Lee, Robin, and Terry catch altogether? (Write your answer on the line.)



They caught \_\_\_\_\_ fish.

2. Jane rolled the die one time. What is the probability of rolling an odd number? (Write your answer in the boxes.)

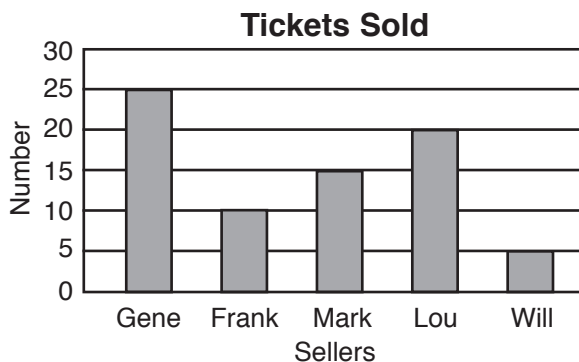



**DAILY**

Name \_\_\_\_\_ Date \_\_\_\_\_

Warm-Up 56

1. The bar graph shows the number of tickets sold by 5 friends. A total of 70 tickets were sold. Which person sold more than 20 tickets? (Write your answer on the line.)



\_\_\_\_\_

2. The table shows the numbers Pete wrote down on different sheets of paper and then put into a bag. What is the probability of picking a number greater than 5 but less than 9? (Write your answer in the boxes.)


Numbers		
1	4	7
2	5	8
3	6	9